

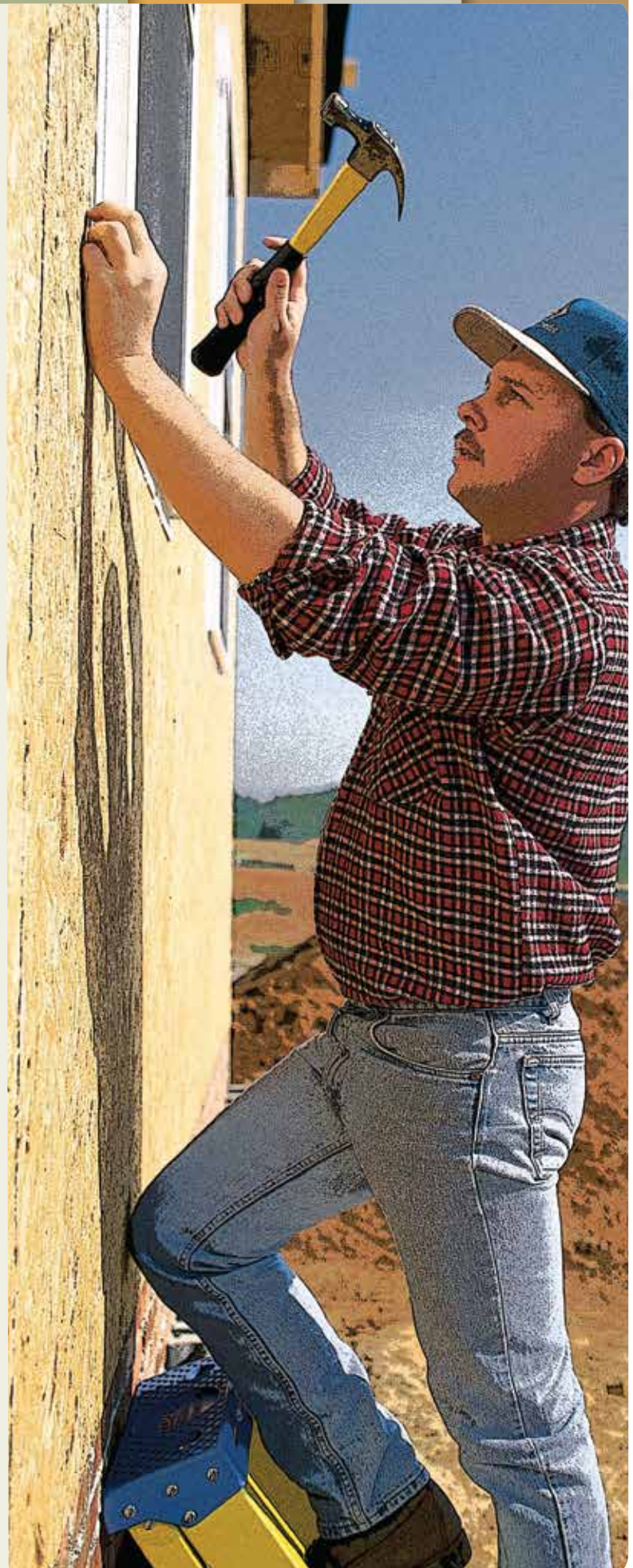


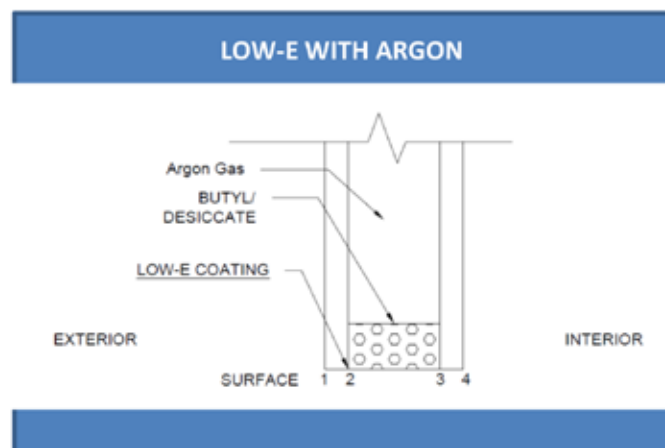
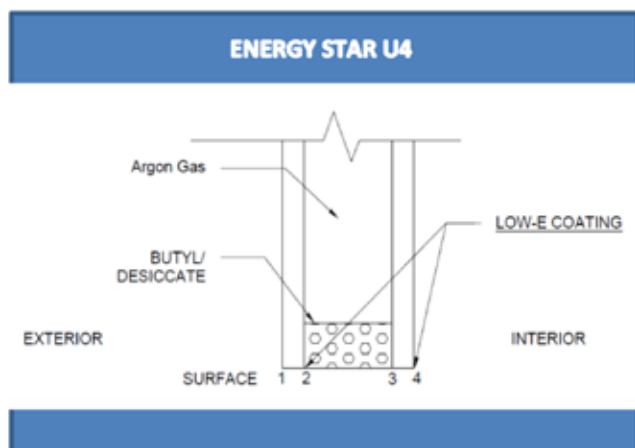
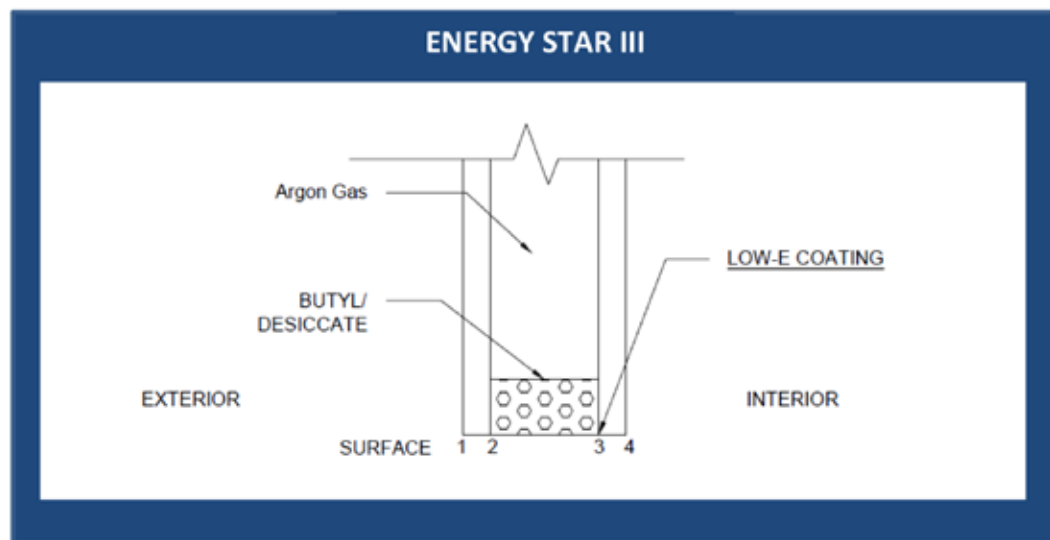
2019 Product Training




BY KAS KEL

MASTerview WINDOWS





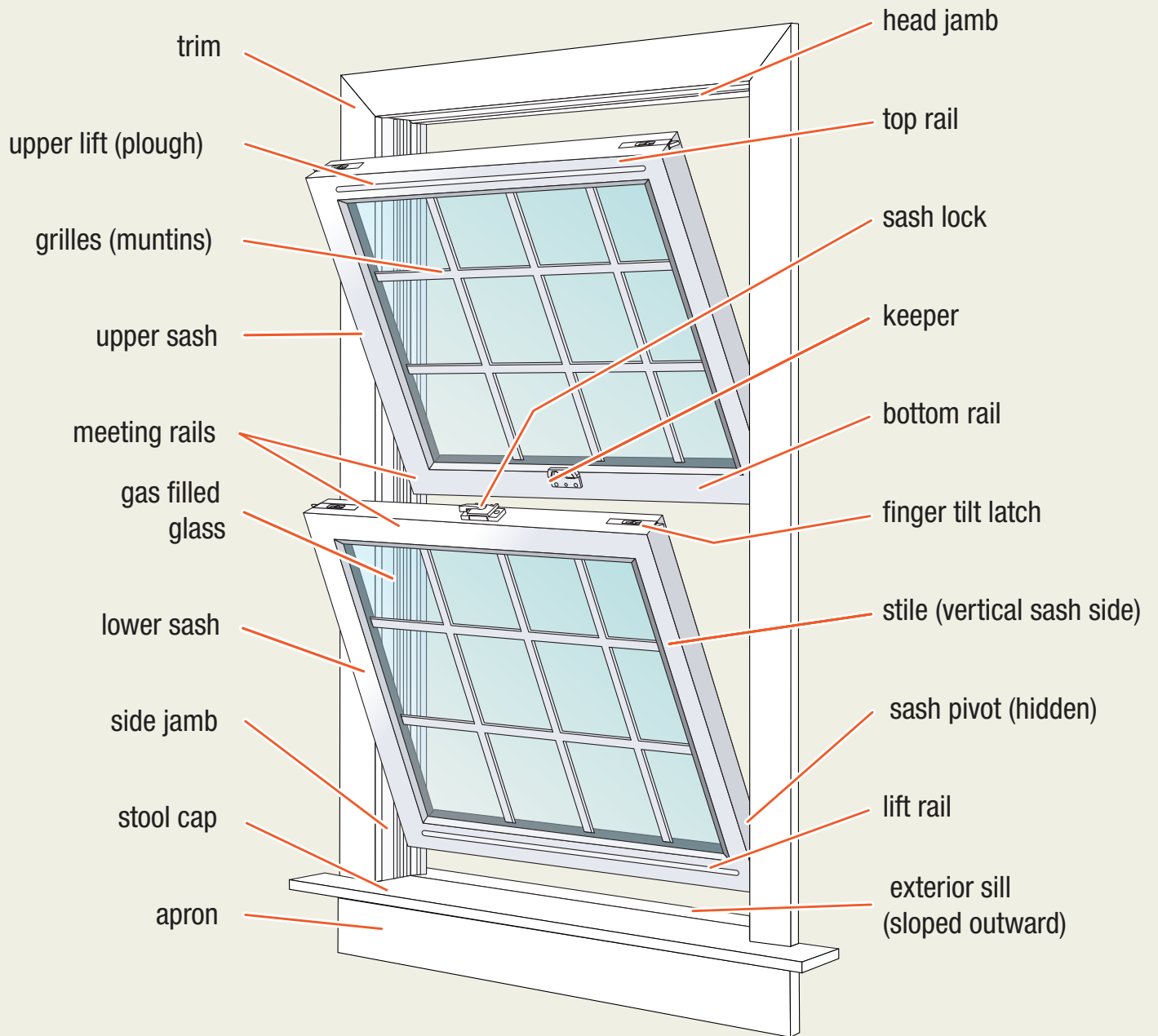
Energy Star III			
Product	Grilles	U-Value	SHGC
2000 Double Hung	No	0.28	0.38
2000 Double Hung	Yes	0.28	0.34
200 Double Hung	No	0.28	0.38
200 Double Hung	Yes	0.28	0.34
300 Double Hung	No	0.27	0.37
300 Double Hung	Yes	0.27	0.34
700/7000 Casement	No	0.26	0.32
700/7000 Casement	Yes	0.26	0.32

Windows			 ENERGY STAR
Climate Zone	U-Factor ¹	SHGC ²	
Northern*	≤ 0.27	Any	Prescriptive
	= 0.28	≥ 0.32	Equivalent Energy Performance
	= 0.29	≥ 0.37	
	= 0.30	≥ 0.42	



**MASTERVIEW
WINDOWS**

BY KAS KEL



BY KAS KEL

MASTerview
WINDOWS

DOE-R5 Glazing Packages

DOE-R5* Glass Package

Insulated triple glass

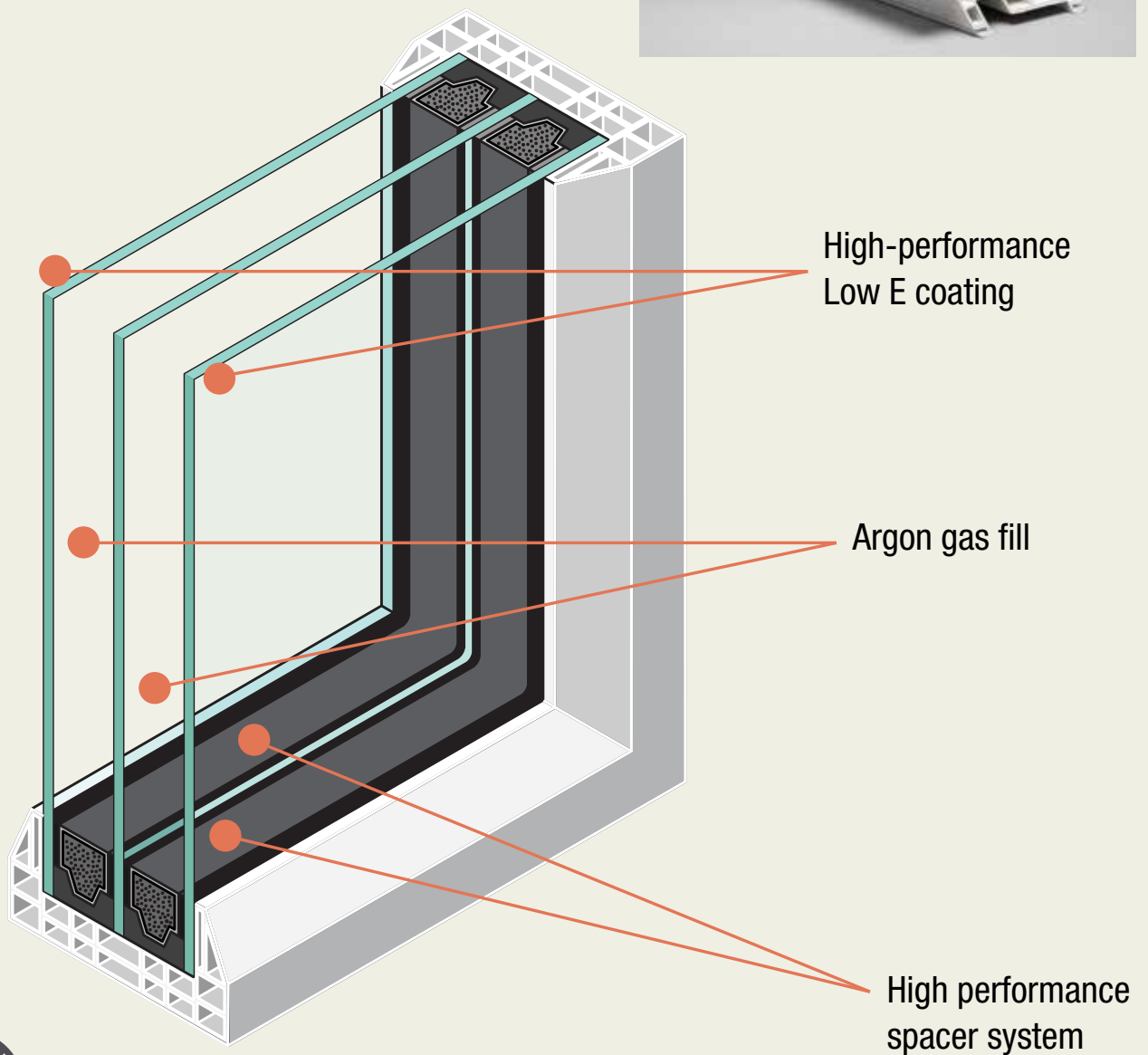
Double high-performance Low E coating

Double argon gas filled between panes

High performance spacer system

NFRC Thermal Performance data without grids

Glass Type	U-Value	SHGC	VLT
DOE-R5	0.2	0.2	0.36



BY KAS KEL

**MASTERVIEW
WINDOWS**

Duralite warm-edge spacer

Ideal for high-volume production of dual- and triple-pane insulating glass units, Duralite® is a patented warm-edge spacer system that is applied in a single step using heat and minimal compression.

Features

Duralite is preassembled with proven components, sealant, spacer and desiccant to create a high-performance system. Other features:

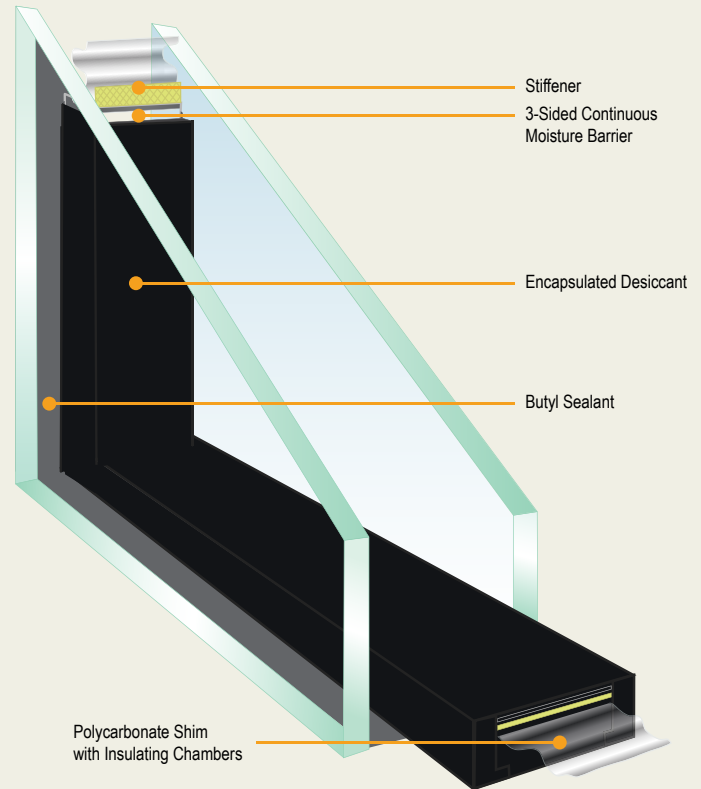
- Composite laminating technology
- Polycarbonate spacer element (no metal)
- Black or gray sightline
- Proven adhesive technology
- Optimized packaging
- Sizes to accommodate airspaces of 1/4" (6mm) to 13/16" (20.5mm)

Benefits

Duralite requires minimal compression for efficient handling and production. Other benefits:

- Smooth surface appearance
- Superior argon gas retention
- Improved condensation resistance
- Warmer edge of glass temperature

Quanex
building products



Excellence

The following information is published as general information only. The listed properties and performance characteristics are approximate values and are not part of the product specification.

Performance

Thermal Conductance (Klin)
0.080 W/m° C based on 1/2" (13mm) spacer

Ψ (psi per EN ISO 10077):
30% lower than next warmest spacer

Moisture Vapor Transmission Rate

0.09 g H₂O/m² per 24 hrs

Volatile Fogging

Passes
12.8

Argon Permeance

6-8 c.c./100 in.² per 24 hrs.

Bondline Adhesive UV Resistance

Excellent

Dew Point Development

-20° F (-29° C) in 48 hrs

Tensile Strength

50 psi

Norm

ASTM F 1249

ASTM E 2189 CGSB

ASTM D 1434

ASTM E 546

TST 389C



BY KAS KEL

MASTERVIEW
WINDOWS



MASTERVIEW WINDOWS

220 DOUBLE HUNG

HIGH PERFORMANCE, LOW MAINTENANCE.

A Natural Fit.



Our most popular new construction window, the 220 Series Double Hung combines high thermal efficiency with high-end features and an exceptionally solid design.

Standard Features

- Fusion welded sash and frame
- Fully weather-stripped interlock at meeting rail
- Beveled exterior masterframe
- Fiberglass full screen
- Sloped sill with interlocking leg
- DP 40 Rating
- Both sash tilt in for easy cleaning
- Reinforced meeting rail
- Also available in Rolling, Picture Window, and Specialty shapes
- 3 1/4" frame depth

Performance Options

- Energy Star U-4 and Energy Star III glazing packages
- Profile or SDL grid package
- Fiberglass half screen
- Multiple colors available
- DP 50 upgrade

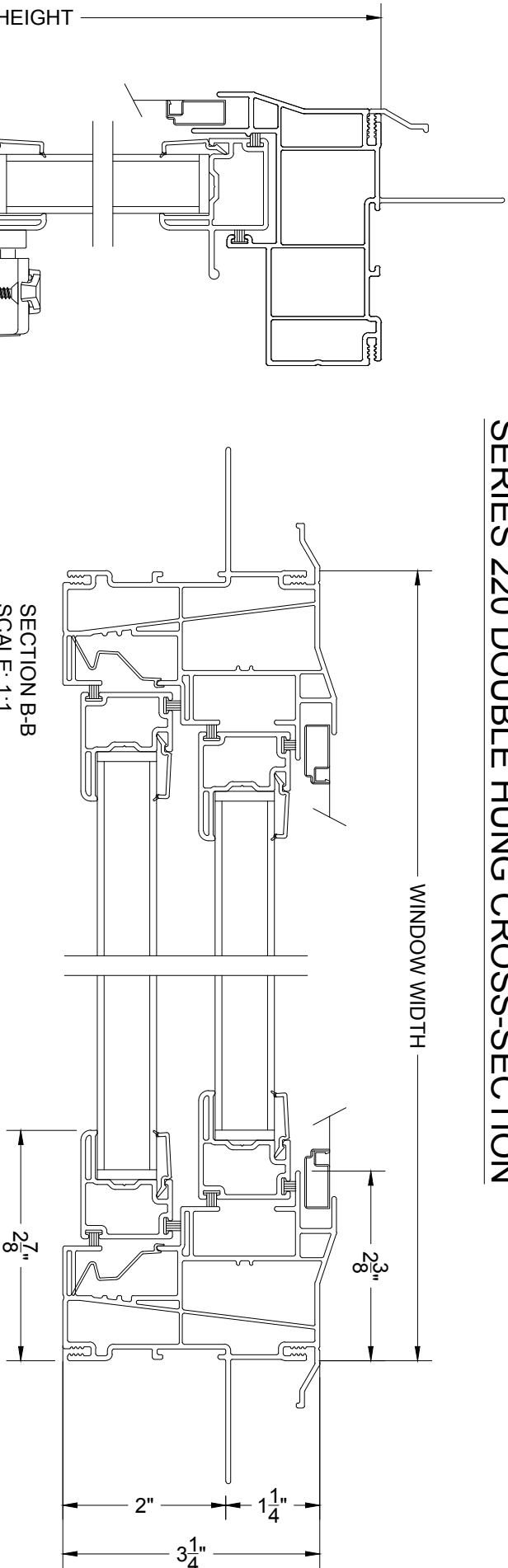
220 Double Hung



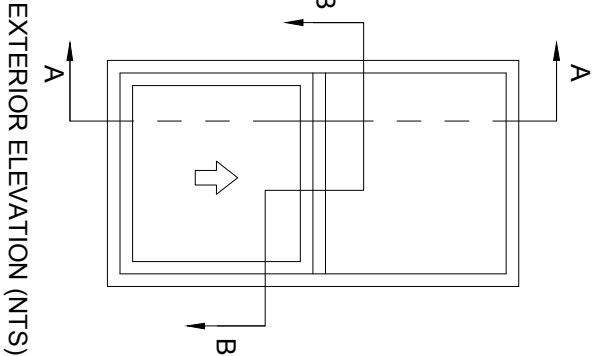
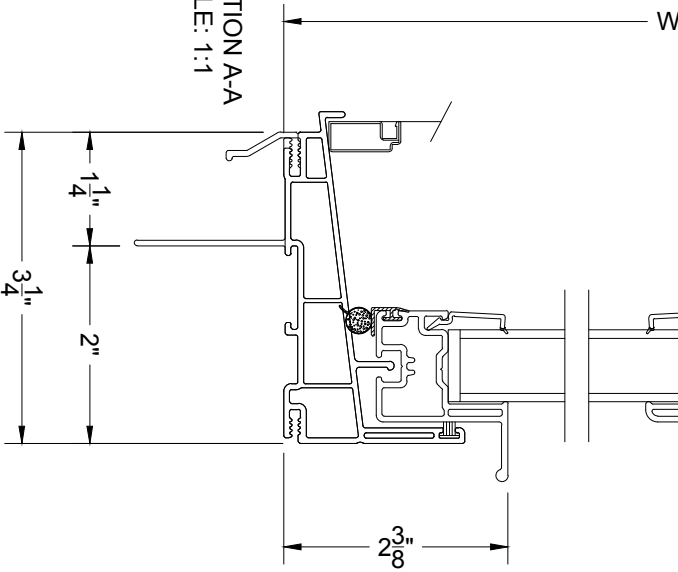
NFRC Thermal Performance Data – 220

Glazing	U-Value	SHGC	VLT
Energy Star U-4	.24	.27	.48
Energy Star III	.28	.37	.51
Low E/Argon	.28	.28	.51
HP Low E	.32	.28	.51
Clear	.46	.62	.63

KASSON & KELLER INC.
SERIES 220 DOUBLE HUNG CROSS-SECTION



SECTION B-B
SCALE: 1:1



COPYRIGHT 2018
THIS DRAWING AND ITS CONTENTS ARE
THE SOLE PROPERTY OF
KASSON & KELLER, INC.
ANY UNAUTHORIZED USE OR
REPRODUCTION IS STRICTLY PROHIBITED.



SHEET:
1
OF
1

DRAWN BY:
BLG

DRAWING #
220 Series DH



MASTERVIEW WINDOWS

280 SINGLE HUNG

HIGH PERFORMANCE, LOW MAINTENANCE.

A Natural Fit.



Advanced engineering and materials make the Masterview 280 one of the best values on the market today. Built with rugged 100 percent first generation PVC, the top sash is fixed, for added protection against air infiltration, and a high thermal rating.

Standard Features

- Welded sash and frame
- Constant force balancing system
- Fully weather-stripped interlock
- Bottom sash tilts in for easy cleaning
- Fiberglass half screen
- Sloped sill with interlocking leg
- DP 35 rated
- Aluminum reinforced meeting rail
- Available in Rolling, Picture window and Hopper
- 3" frame depth

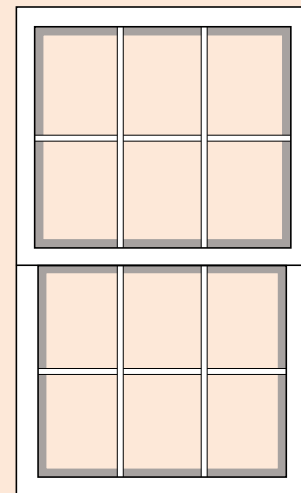
Performance Options

- Energy Star glazing packages
- DP 50 commercial upgrade
- White, beige and bronze/white color
- Profile grid package
- 3" frame depth

Builder Features

- Integral nail fin
- Integral nail fin and J-channel
- 3" Cambridge flat casing
- 4 9/16" pre-primed or clear extension jamb
- 6 9/16" pre-primed or clear extension jamb

280 Single Hung



NFRC Thermal Performance Data — 280

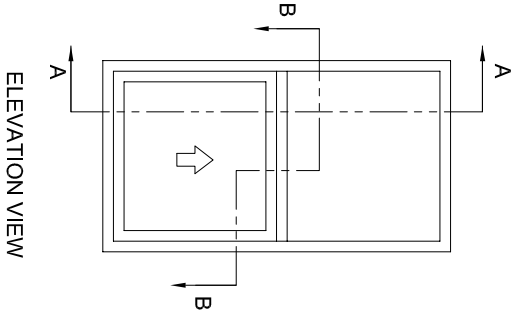
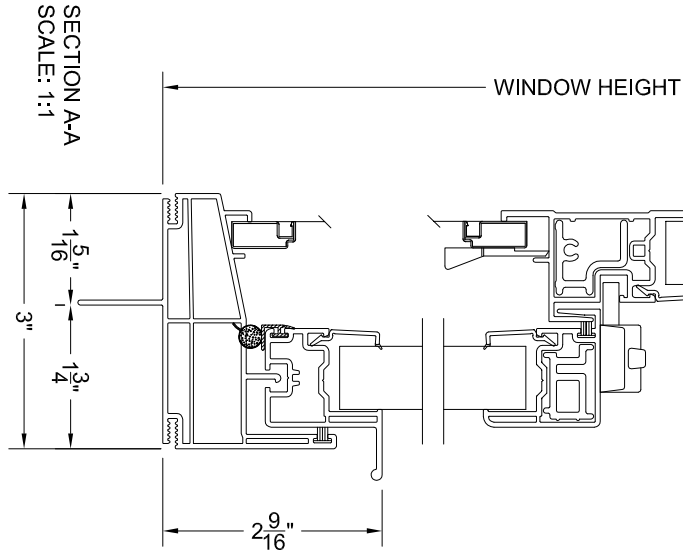
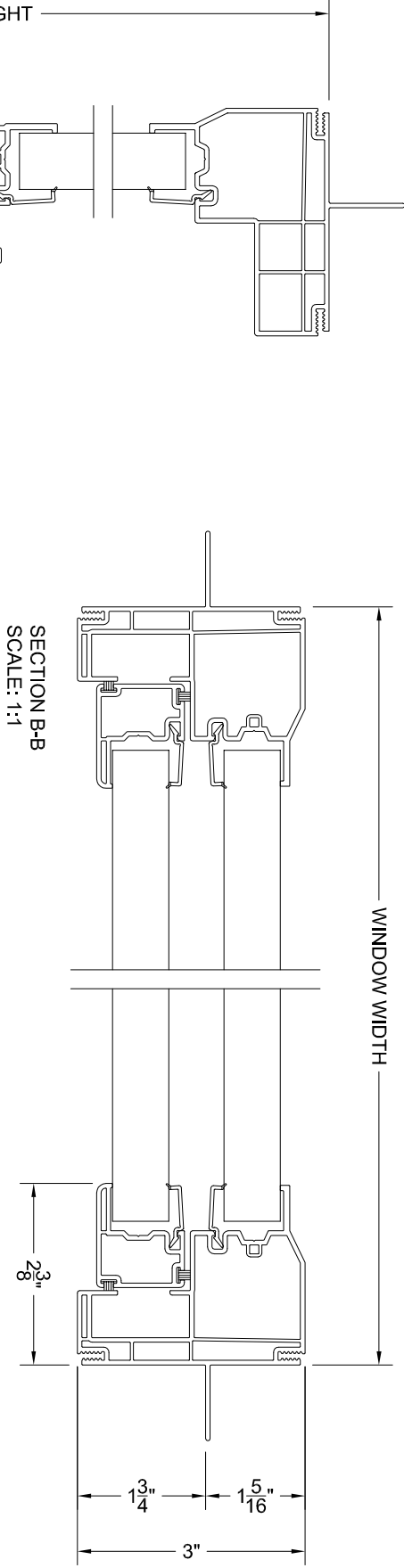
Glazing	U-Value	SHGC	VT
Energy Star U4	0.25	0.28	0.49
Low-E Argon	0.29	0.29	0.53
HP Low E	0.33	0.29	0.53



KASSON & KELLER INC.

SERIES 280 SINGLE HUNG CROSS-SECTION

10-01-10



COPYRIGHT 2010
THIS DRAWING AND ITS CONTENTS ARE
THE SOLE PROPERTY OF
KASSON & KELLER, INC.
ANY UNAUTHORIZED USE OR
REPRODUCTION IS STRICTLY PROHIBITED.



MASTERVIEW
WINDOWS

BY KAS KEL

SHEET:

1
OF
1

DRAWN BY:

JPP

DRAWING #

280 SERIES SINGLE HUNG



MASTERVIEW WINDOWS

BRICKMOLD SERIES

HIGH PERFORMANCE, LOW MAINTENANCE.

A Natural Fit.



The 100 Series Single Hung and 300 Series Double Hung feature an integrated brickmold trim package or a 3 1/2" vinyl trim. Both also serve as a J-channel pocket, for a clean look and easy installation.

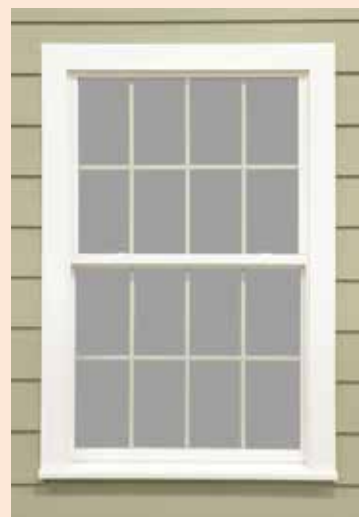
Standard Features

- Welded sash and frame
- Fiberglass screens
- Reinforced meeting rail
- Sloped sill with interlocking leg
- 100 SH: bottom sash tilts in/half screen
- 300 DH: both sashes tilt in/full screen
- 100 SH: frame depth 3"
- 300 DH: frame depth 3 5/8"
- Fully weather-stripped interlock
- Also available in Rolling, Picture window, and specialty shapes

Performance Options

- Energy Star U-4 and Energy Star III glazing packages
- Profile or SDL grid package
- DP 50 upgrade for 100 SH and 300 DH
- Multiple colors available

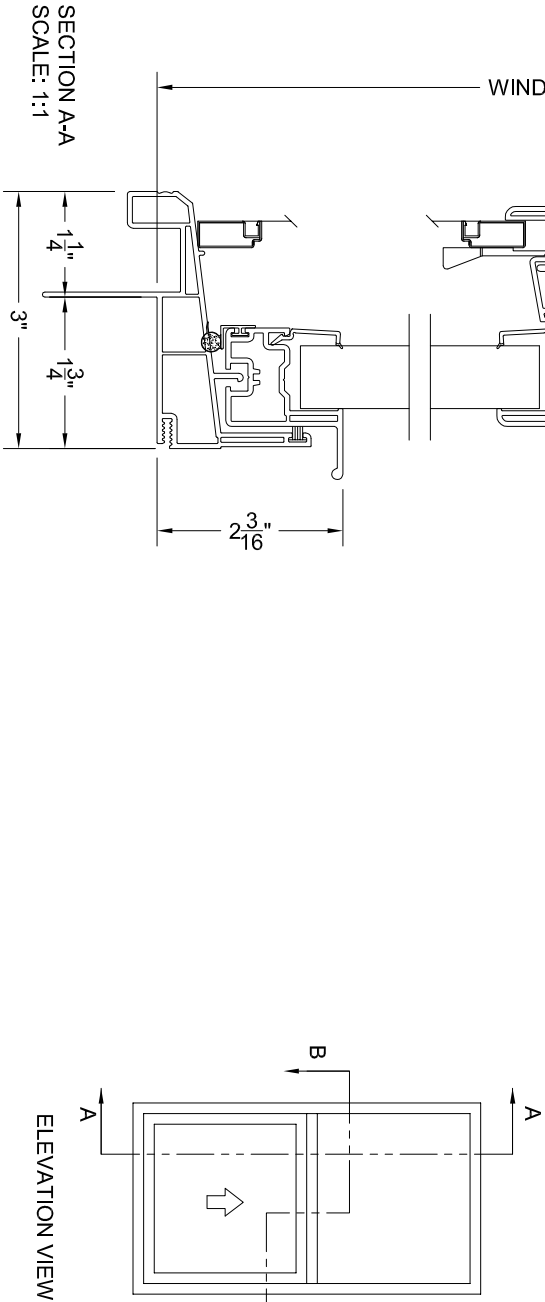
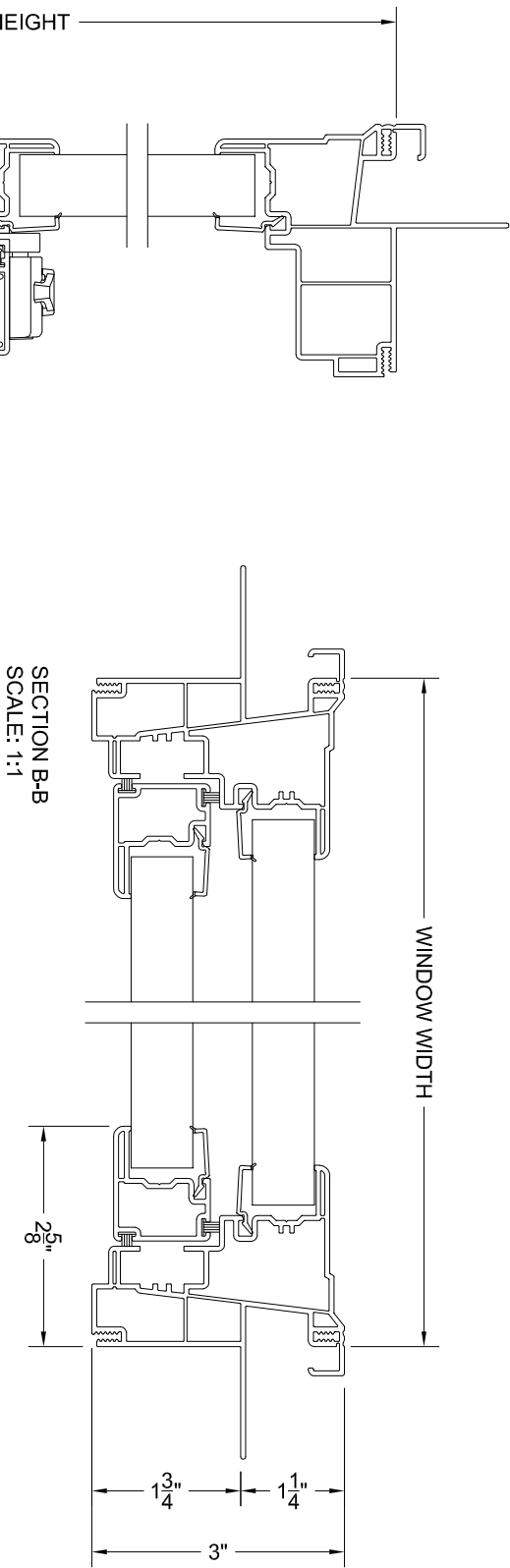
Brickmold Series 300 Double Hung



NFRC Thermal Performance Data – 300

Glazing	U-Value	SHGC	VLT
Energy Star U-4	.24	.27	.49
Energy Star III	.27	.37	.52
Low E/Argon	.27	.28	.52
HP Low E	.31	.29	.52
Clear	.45	.63	.64

KASSON & KELLER INC.
SERIES 100 SINGLE HUNG CROSS-SECTION



COPYRIGHT 2010
THIS DRAWING AND ITS CONTENTS ARE
THE SOLE PROPERTY OF
KASSON & KELLER, INC.
ANY UNAUTHORIZED USE OR
REPRODUCTION IS STRICTLY PROHIBITED.

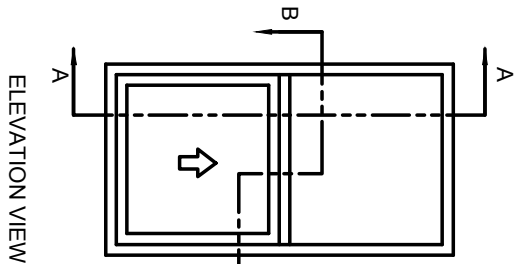
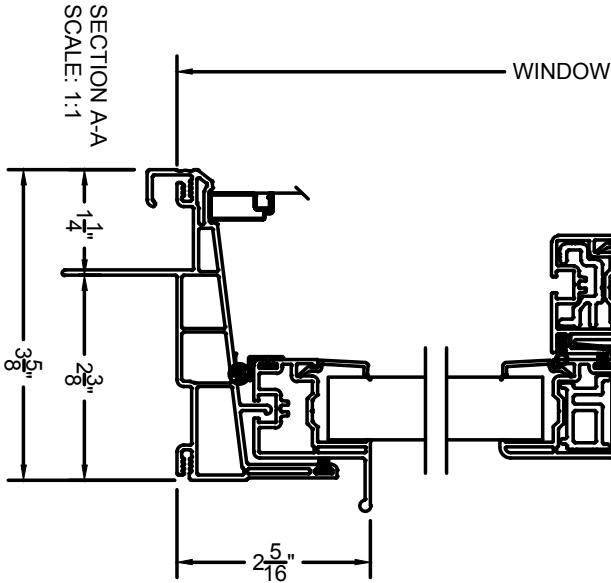
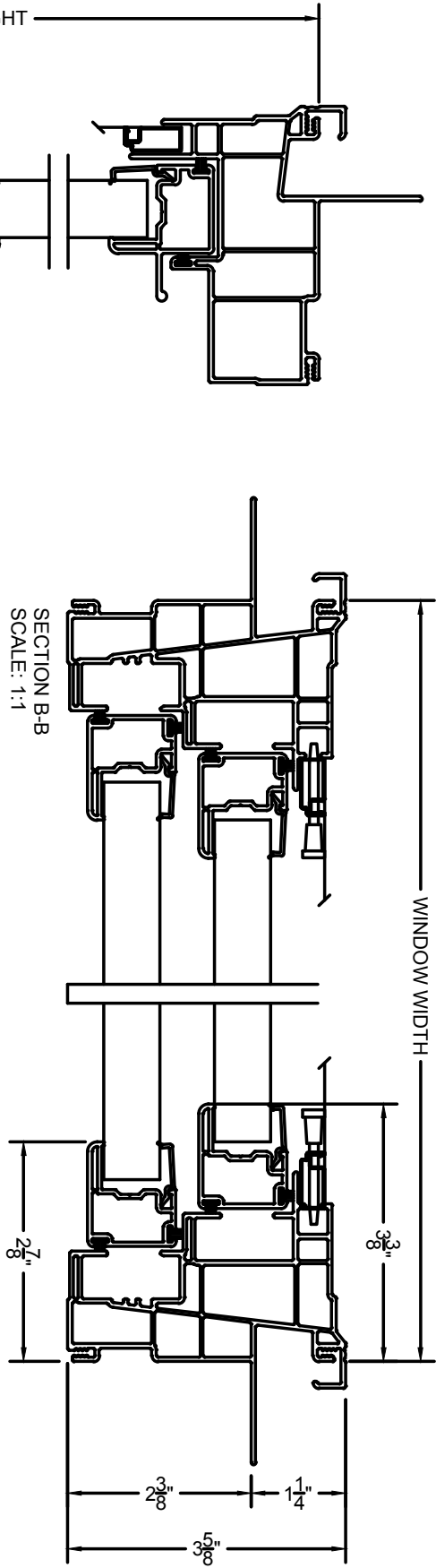


SHEET:
1
OF
1

DRAWN BY: JPP

DRAWING #
100 SERIES SINGLE HUNG

KASSON & KELLER INC.
SERIES 300 DOUBLE HUNG CROSS-SECTION



ELEVATION VIEW

COPYRIGHT 2010
THIS DRAWING AND ITS CONTENTS ARE
THE SOLE PROPERTY OF
KASSON & KELLER, INC.
ANY UNAUTHORIZED USE OR
REPRODUCTION IS STRICTLY PROHIBITED.



MASTERVIEW
WINDOWS

BY KAS KEL

SHEET:

1
OF
1

DRAWN BY:

BLG

DRAWING #

300 SERIES DOUBLE HUNG



MASTERVIEW WINDOWS

400 DOUBLE HUNG

HIGH PERFORMANCE, LOW MAINTENANCE.

A Natural Fit.



Engineered for exceptional strength and efficiency, the 400 offers the premium construction and features typically found in the most expensive lines.

Standard Features

- Thermal fusion welded frame and sash
- Sleek slimline sash profile
- Quad weather stripping at key contact points
- Also available in Rolling and Picture window
- Full length lift handles
- Full screen
- Approved forced entry locking system
- Sash tilt in for easy cleaning
- Double recessed meeting rail locks
- DP 50 Rated
- Interlocking sloped sill
- Dual ventilation latches
- 3 1/4" Frame Depth

Performance Options

- Energy Star U-4 & DOE R5 Triple glazing packages
- Multiple colors available
- Profile or SDL grid package
- Impact rated

400 Double Hung

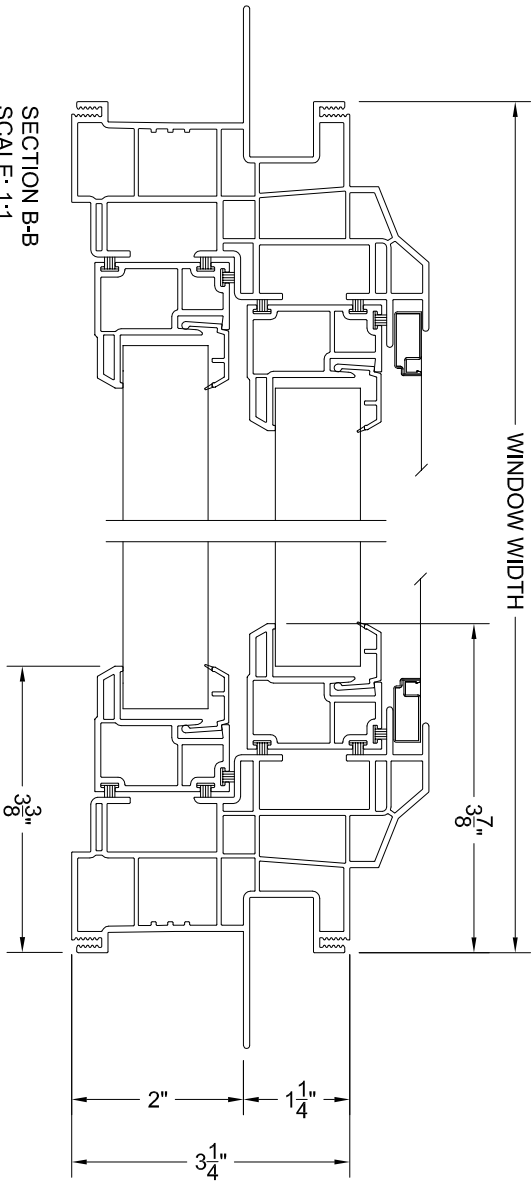


NFRC Thermal Performance Data – 400

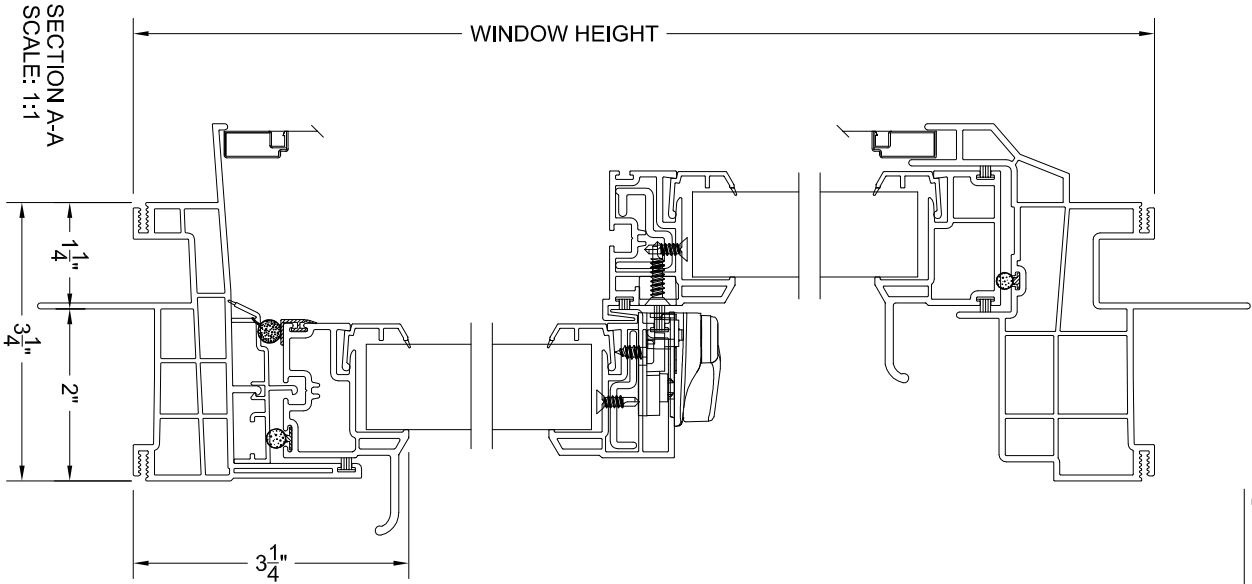
Glazing	U-Value	SHGC	VLT
DOE-R5	.20	.20	.36
Energy Star U-4	.24	.25	.44
Low E/Argon	.28	.26	.48
HP Low E	.31	.26	.48
Clear	.44	.57	.59



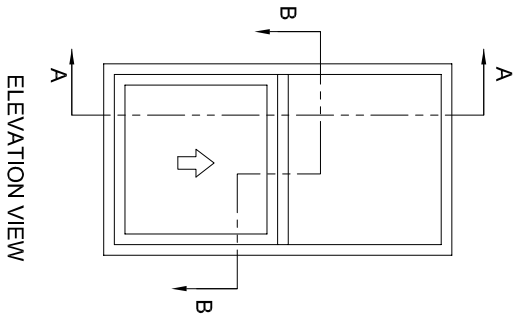
KASSON & KELLER INC.
SERIES 400 DOUBLE HUNG CROSS-SECTION



SECTION B-B
SCALE: 1:1



SECTION A-A
SCALE: 1:1



ELEVATION VIEW

COPYRIGHT 2010
THIS DRAWING AND ITS CONTENTS ARE
THE SOLE PROPERTY OF
KASSON & KELLER, INC.
ANY UNAUTHORIZED USE OR
REPRODUCTION IS STRICTLY PROHIBITED.



MASTERVIEW
WINDOWS

BY KAS KEL

SHEET:
1
OF
1

DRAWN BY: JPP

DRAWING #
400 SERIES DOUBLE HUNG



MASTERVIEW WINDOWS

700 CASEMENT / AWNING

HIGH PERFORMANCE, LOW MAINTENANCE.

A Natural Fit.



Masterview 700 Casement and Awning windows are engineered for easy operation and maximum ventilation. Multi-point locking provides added safety and security, and all models are available in single and multi-unit combinations.

Standard Features

- Fusion welded frame and sash
- Multi-point locking system
- Double weather stripping around perimeter
- Sash crank out 90 degrees
- Fiberglass full screen
- DP 50 Rated
- Also available in Awning and Picture window
- Common jamb - multiple units

Performance Options

- Energy Star U-4 and Energy Star III glazing packages
- Egress hardware
- Multiple colors available
- Profile or SDL grid package
- Multi-unit factory mullion package

700 Casement/Awning

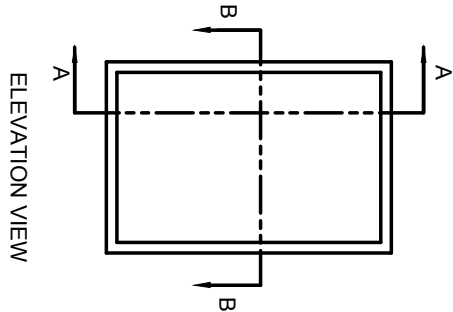
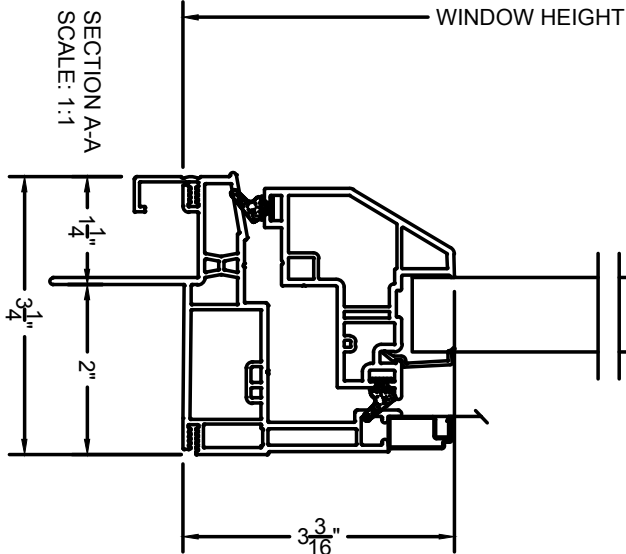
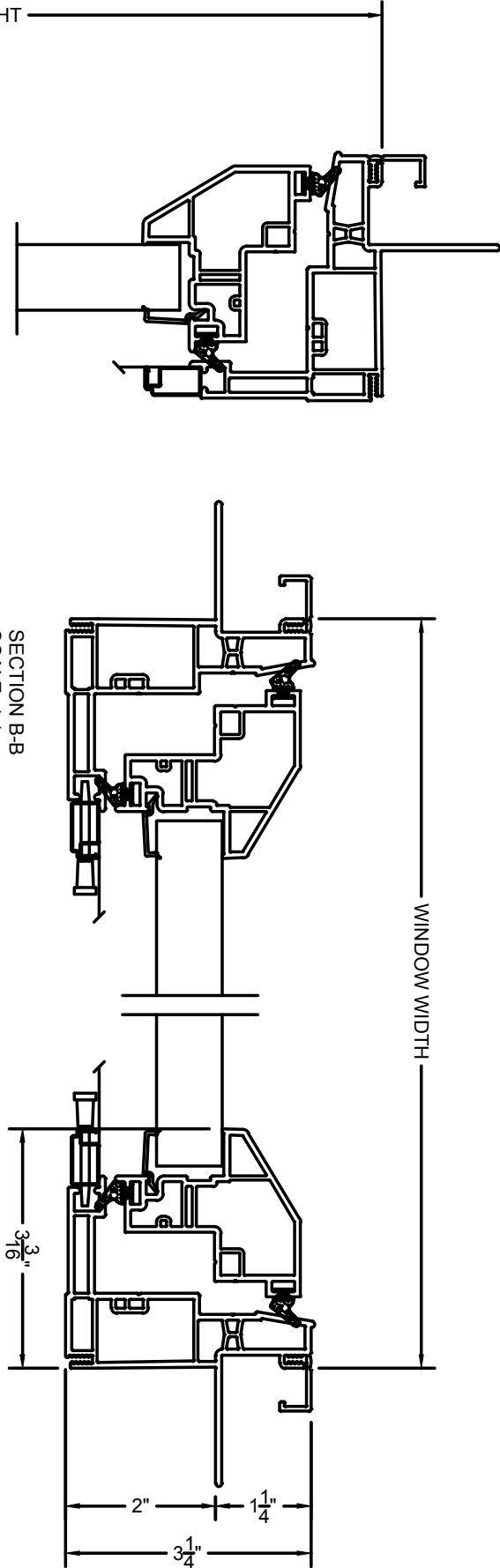


NFRC Thermal Performance Data – 700

Glazing	U-Value	SHGC	VLT
DOE-R5	.20	.19	.33
Energy Star U-4	.23	.23	.41
Energy Star III	.26	.32	.44
Low E/Argon	.26	.24	.44
HP Low E	.29	.24	.44
Clear	.44	.57	.59



KASSON & KELLER INC.
SERIES 700 CASEMENT CROSS-SECTION



SECTION B-B
SCALE: 1:1

COPYRIGHT 2011
THIS DRAWING AND ITS CONTENTS ARE
THE SOLE PROPERTY OF
KASSON & KELLER, INC.
ANY UNAUTHORIZED USE OR
REPRODUCTION IS STRICTLY PROHIBITED.



SHEET:
1
OF
1

DRAWN BY: JPP

DRAWING #
700 SERIES CASEMENT



MASTerview WINDOWS

BAY / BOW

HIGH PERFORMANCE, LOW MAINTENANCE.

A Natural Fit.



The MasterView Bay/Bow series provides high-end elegance in a high-efficiency system. With its heavily insulated seat board and Energy Star Rated glazing option, MasterView Bays and Bows deliver outstanding thermal performance in a particularly vulnerable area of the home.

Standard Features

- All Welded Construction
- 1 1/2" Insulated Seat Board
- Red Oak or Birch Veneer Head and Seat Board
- Screens on Operating Vents
- 4 9/16" or 6 9/16" Jamb Depth
- Hanging Cable System
- Flexible Closure Fin
- Bay Available in DH or Casement Styles

Performance Options

- Energy Star Rated Glazing Packages
- Profile or SDL Grid Package
- Multiple Colors Available
- Custom Jamb Depths

Bay Window



Bow Window





MASTERVIEW WINDOWS

ROLLING / ACCESSORY

HIGH PERFORMANCE, LOW MAINTENANCE.

A Natural Fit.



MasterView Rolling Windows are built on precision-calibrated rollers for long life and smooth fingertip operation. Sash is easily removed for cleaning. Available in the 100, 200, 300 and 400 Series.

MasterView Hopper Windows feature premium construction and a wide range of custom sizes. All sashes tilt in from the bottom.

Standard Features

- Precision Calibrated Rollers
- Interlock at Meeting Rail
- Removable Sash for Easy Cleaning
- Fiberglass Half Screen
- Double Locks Over 28" Height

Performance Options

- Fiberglass Full Screen
- Energy Star Rated Glazing Packages
- Profile Grid Package
- SDL Grid Package
- Multiple Colors Available

Rolling Window



Hopper Window





MASTerview WINDOWS

SPECIALTY SHAPES

HIGH PERFORMANCE, LOW MAINTENANCE.

A Natural Fit.



The Masterview Windows Specialty Shapes allow for an unlimited range of architectural expressions without compromising energy efficiency. For building or remodeling, they open a new world of possibilities.

Standard Features

- Thermal welded forming process
- Structural welded frame
- Super heavy wall for strength and rigidity

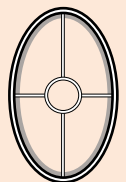
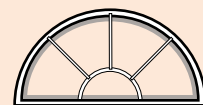
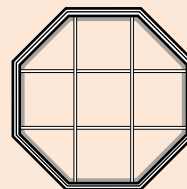
Performance Options

- Energy Star U-4, Energy Star III, Low E/Argon and HP Low E glass packages
- Interior trim packages
- Exterior PVC trim packages
- Extension jambs

Specialty Shape Options

- Circle top
- Eyebrow
- Gothic/half-gothic
- Oval/half-oval
- Full circle
- Ellipse
- Quarter arch
- Transom
- Operating octagon
- Custom shapes

Specialty Shapes





MASTERVIEW WINDOWS

3200 PATIO DOOR

HIGH PERFORMANCE, LOW MAINTENANCE.

A Natural Fit.



The MasterView 3200 is one of the best built, best performing patio doors available at any price. It's reinforced at key points with heavy-duty aluminum, for a lifetime of trouble-free operation.

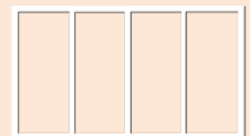
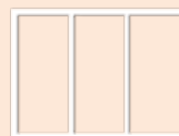
Standard Features

- Sill engineered for excellent drainage
- Integral nail fin and screen track
- Aluminum screen frame with fiberglass mesh screening
- One rolling and one stationary panel
- Interlocking meeting rail
- Adjustable steel rollers
- Dual point locking hardware

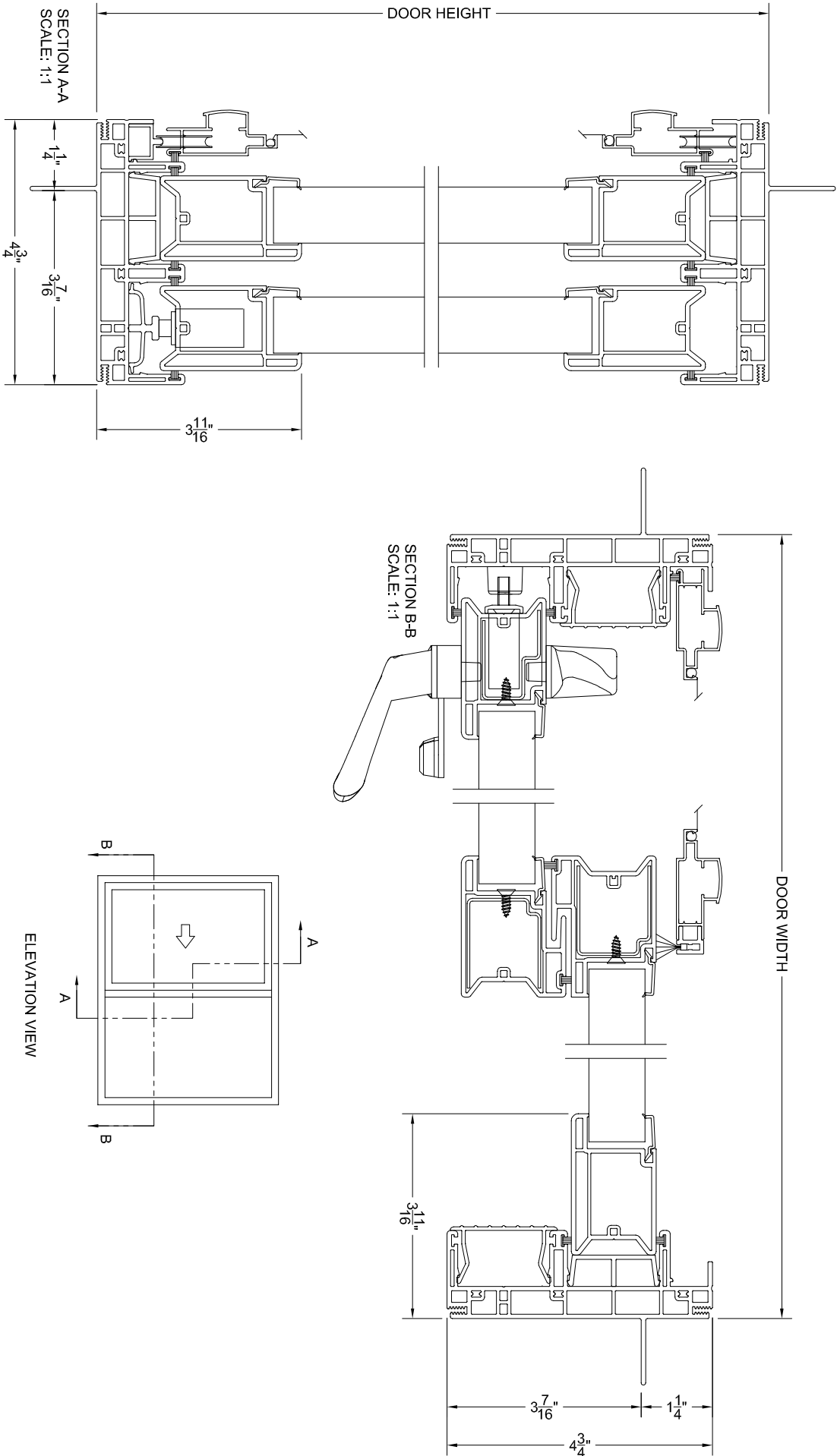
Performance Options

- Energy Star Rated glazing package
- 5, 6, 8 foot 2-lite styles
- 9, 12 foot 3-lite styles
- 12 foot 4-lite styles
- Field-applied, pre-cut J-channel
- Field-applied, pre-cut extension jamb
- 4 9/16" or 6 9/16" pre-primed or clear extension jamb
- Profile Grid Package
- Multiple Colors Available

3200 Patio Door



KASSON & KELLER INC.
SERIES 3200 NEW CONSTRUCTION PATIO DOOR
CROSS-SECTION



COPYRIGHT 2011
THIS DRAWING AND ITS CONTENTS ARE
THE SOLE PROPERTY OF
KASSON & KELLER, INC.
ANY UNAUTHORIZED USE OR
REPRODUCTION IS STRICTLY PROHIBITED.



SHEET:

1
OF
1

DRAWN BY:

JPP

DRAWING #

3200 SERIES PATIO DOOR